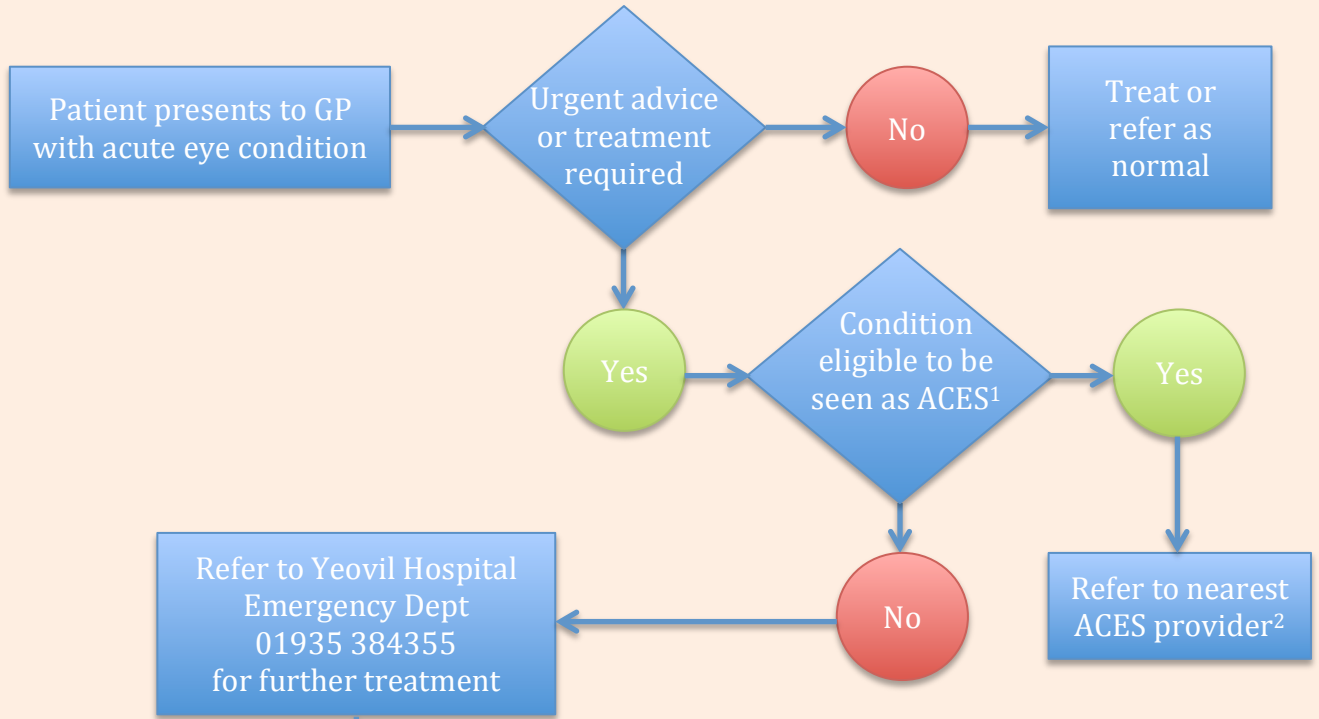
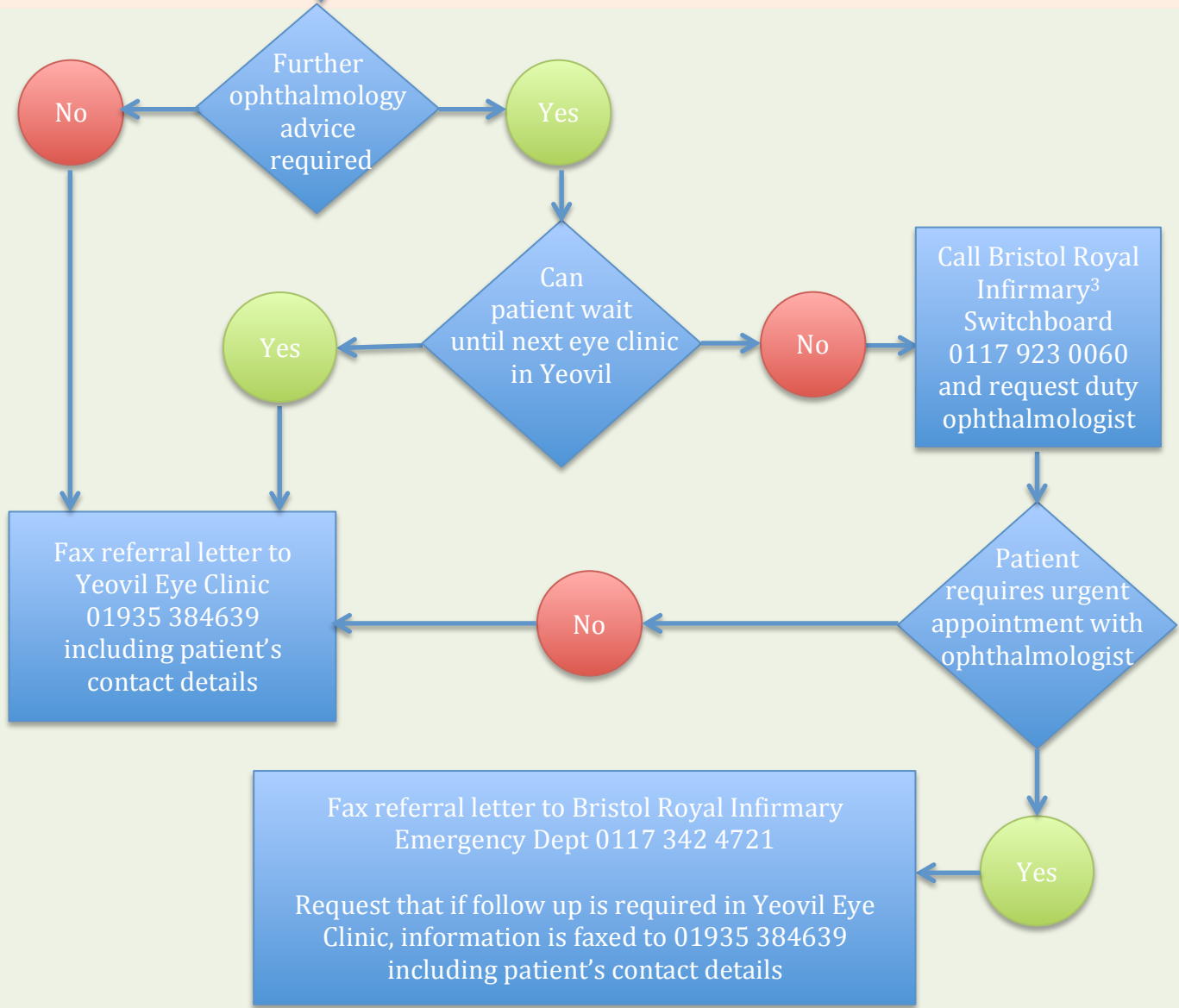


# Referral pathway for out-of-hours ophthalmic emergencies - Yeovil area

5.00pm – 9.00am Monday – Friday & 5.00pm Friday – 9.00am Monday



GP pathway



A&E pathway

Notes:

1 – Supply list of conditions eligible for ACES

2 – Supply list of providers of ACES

3 – Highlight the fact that the referrals are made to BRI not the eye hospital